

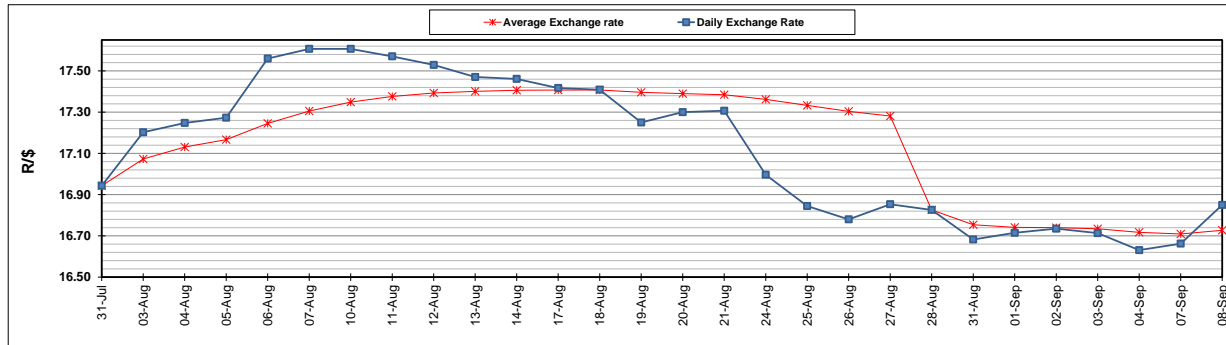
	PETROL 95 ULP	PETROL 93 ULP & LRP	DIESEL 0.05%	DIESEL 0.005%	ILL. PAR.
GAUTENG PUMP PRICE (SA c/l) AS FROM 02/09/2020	1,518.000	1,489.000	-	-	-
WHOLESALE PRICE (SA c/l) AS FROM 02/09/2020	-	-	1,327.560	1,331.960	716.828
SINGLE NATIONAL MAXIMUM RETAIL PRICE	-	-	-	-	899.000
BASIC FUEL PRICE - 08/09/2020 (SA c/l)	516.441	505.384	471.113	472.862	411.838
PRESS RELEASE CONTRIBUTION TO BFP 02/09/2020 - 08/09/2020 (SA c/l)	565.470	546.470	576.630	581.030	512.128
UNIT OVER/(UNDER) RECOVERY - 08/09/2020 (SA c/l)	49.029	41.086	105.517	108.168	100.290
AVERAGE BASIC FUEL PRICE 28/08/2020 - 08/09/2020	540.429	531.880	511.019	513.333	447.251
AVERAGE UNIT OVER/(UNDER) RECOVERY 28/08/2020 - 08/09/2020	26.654	16.202	73.486	75.572	74.627

### ANALYSIS MOVEMENT OF AVERAGE OVER/(UNDER) RECOVERY

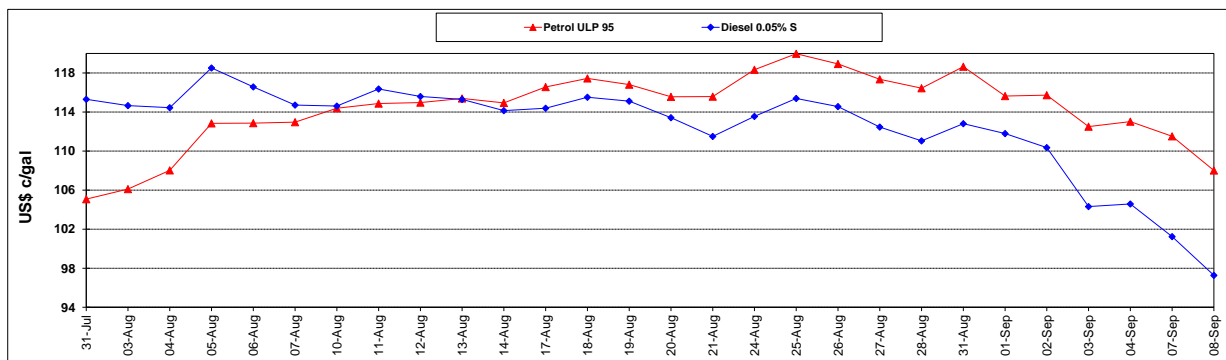
	PETROL 95	PETROL 93	DIESEL 0.05%	DIESEL 0.005%	ILL. PAR.
- MOVEMENT IN INTERNATIONAL PRODUCT PRICES	8.739	(1.429)	56.546	58.555	59.801
- MOVEMENT IN EXCHANGE RATE	17.915	17.632	16.940	17.017	14.826
AVERAGE UNIT OVER/(UNDER) RECOVERY 28/08/2020 - 08/09/2020	26.654	16.202	73.486	75.572	74.627

### R/\$ EXCHANGE RATE - (R/\$16.8500 - 08/09/2020)

#### EXCHANGE RATE USED IN BASIC FUEL PRICE



#### INTERNATIONAL PRODUCT PRICES OF BASKET USED IN BASIC FUEL PRICE



#### BASIC FUEL PRICE IN SA CENTS PER LITRE

